

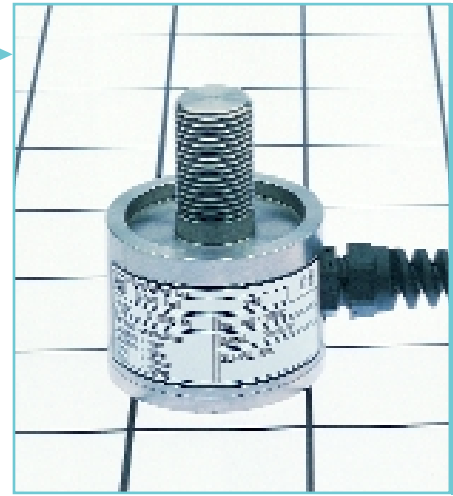
Target Load Cells LC-256 & LC-257

Integral 4 to 20mA output option

IP67 version for High Pressure Cleaning

Function: Axial Load Cells that are mechanically stable when loaded. The domed foot version allows the load cell to self-adjust/correct against off axis loading errors which dispenses with requirements for expensive load alignment assemblies. The load cells have a smooth stainless steel sealed construction suitable for all industrial applications with high reliability and precision. These Load Cells are the ideal choice for working as load feet on big bag filling frames, pallet platforms and fixed or mobile tanks, hoppers and mixers. They are also suited for tensile and compressive force measurements for machine control and mechanical testing in harsh industrial environments.

Ranges: 40, 80, 125, 250, 500Kg, 1, 2, 4, 6, 8, 12, 16 and 24 tonne.



Sensors - LOAD CELLS

SPECIFICATIONS

Please note that the following are typical ranges. We also manufacture sensors to cater for other ranges, within limitations detailed below.

RANGES:

Rated Load

LC-256
40, 80, 125, 250 and 500 Kg
1, 2, 4 and 6 tonne

LC-257

8, 12, 16 and 24 tonne

Safe Overload

50% of Rated Load

Mechanical Failure

LC-256 200% of Rated Load
LC-257 100% of Rated Load

Safe Sideload

100% of Rated Load

Other special ranges are available if required - please contact our internal sales department for further details

OUTPUT:

Rated Output
2.3mV / V

Rated Output - Rationalised
2.0mV / V

Combined Error - typically Non-Linearity & Hysteresis
LC-256 $\pm 0.05\%$ of Rated Load
LC-257 $\pm 0.1\%$ of Rated Load

Repeatability
 $\pm 0.02\%$ of Rated Load

Zero Return, Creep (20 mins)
 $\pm 0.05\%$ of Actual Load

Rationalisation Tolerance
 $\pm 0.1\%$ of Rated Load

Zero Load Output
 $\pm 4.0\%$ of Rated Load

Inclined Load Error - concentric @ 3°
LC-256 $\pm 0.25\%$ of Rated Load

SUPPLY:

Excitation Voltage Recommended
10 Volt DC

Maximum
20 Volt DC

Terminal Resistance:-

Input - Unrationalised
750 ohms nominal

Output
700 ohms nominal

Insulation Resistance Minimum @ 50V
500 Mohms

N.B. Hazardous Zone option Insulation Test - 500V rms for 1 minute without break down.

GENERAL:

Temperature Range:-

Compensated
-10 to +50°C

Safe
-10 to +80°C

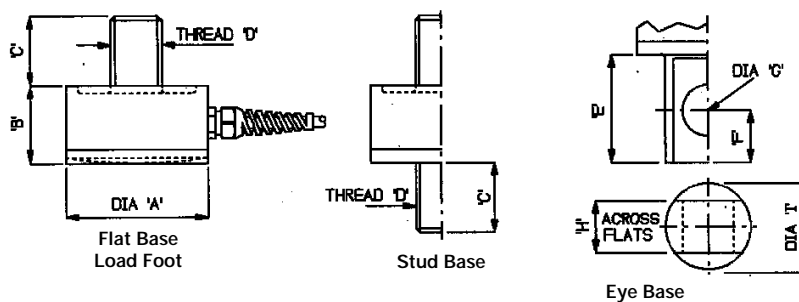
Temperature effect (over compensated range) :-
On Span Output
 $\pm 0.02\%$ of Actual Load / $\Delta 10^\circ\text{C}$

On Zero Output
 $\pm 0.05\%$ of Rated Load / $\Delta 10^\circ\text{C}$

Cable Length
The load cells are fitted with 2m of PVC insulated 4 core screened cable to Defstan 61-12.

Weights
LC-256
40Kg to 500Kg - 330gms
1 to 6 tonne - 1 Kg
LC-257 - 5.5 Kg

MECHANICAL DETAILS



Capacity	ø 'A'	'B'	'C'	Thread 'D'	'E'	'F'	ø 'G'	'H'	ø 'I'
40 to 500kg	44	32	25	M12 x 1.75	26.5	12	12	12	20
1 to 6 tonne	66	45	35	M24 x 2	51.5	24	24	24	40
8 to 24 tonne	112	72	65	M48 x 2	-	-	-	-	-

Dimensions in mm

ORDERING DETAILS

- (a) Give identification code, i.e. LC-256
(b) Give details of input range, i.e. 0 to 1 tonne

- (c) Give details of base required, i.e. Stud Base
(d) State whether for Tension, Compression or both



LEE-DICKENS LTD
Desborough, Kettering, Northants NN14 2QW U.K.
Tel: (01536) 760156 Fax (01536) 762552